

Sir Henry Brackenbury Road
Ashford

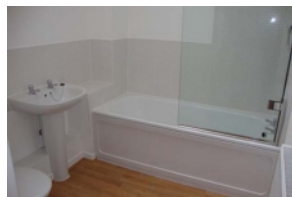
To Let £775

HOBBS • PARKER

Residential Lettings



Kitchen



Bathroom



Living Room



Front

2 Bedrooms, Garden

A modern apartment situated on the popular Repton Park Development which is set against a back drop of woodland and open spaces yet within walking distance of local shops and only a mile from Ashford itself. This apartment benefits include modern fitted Kitchen and Bathroom, 2 Bedrooms and a good sized Sitting Room. Many of the rooms have velux windows which add light and character to the property. In addition the property has a front garden, private entry, gas central heating and double glazing.

